



ECC Group

The ECC Group consists of three companies that operate independently from one another, each in their specific area. The mutual synergy guarantees an added value for our professional partners.

When quality is your standard...



ECC nv

Production and application of synthetic resins and carbon composites.

- Solutions for waterproofing and leaksealing
- Concrete repair and protection
- Reinforcement of constructions
- Application of wear-resistant, chemical-resistant and aesthetic flooring



TRADECC nv

Worldwide sales of products produced by ECC and ETEC for waterproofing, structural repair, corrosion protection and other building chemicals.



ETEC nv

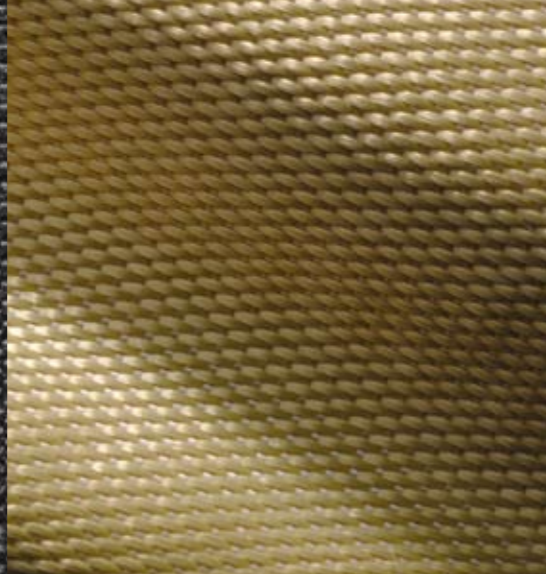
Design and application of liquid containment projects: sealing of tanks, petrol stations, landfills, lagoons,...

Study and design of reinforcement projects with carbon laminates, carbon fibre and aramid fibres.

ECC nv - TRADECC nv - ETEC nv
 Terbekehofdreef 50-52 - BE-2610 Antwerp
 Tel. +32 (0)3 828 94 95 - Fax +32 (0)3 830 27 69
 info@tradec.be - www.tradec.be

PC® Polycoating, MRC® and Trasyn® are registered trademarks of our companies.

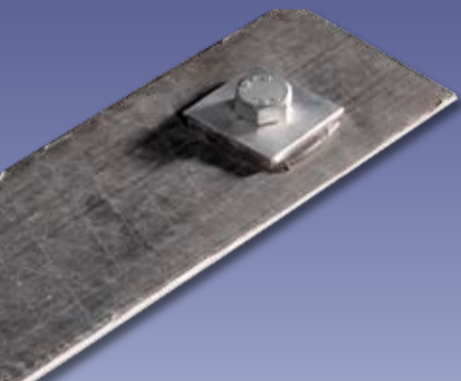
Carbon fibre laminates and textiles



Products and techniques for the construction and chemical industry

PC® Carbocomp

Carbon fibre laminates



PC® Carbocomp laminates are used to increase the bending strength of structural elements. These carbon fibre laminates are glued with the PC® 5800 BL epoxy glue on the surface which has to be strengthened.

Applications

- Increase bending strength
- Increase bearing capacity
- Decrease deformation of the construction
- Decrease internal steel tension

Advantages

- High tensile strength
- High modulus of elasticity
- Minimum 5 times stronger than steel
- High acid and alkali resistance
- Limited own weight and thickness
- Easy to install
- Does not corrode
- Protective peel-ply



PC® Carbocomp UNI

Uni-directional carbon fibre laminates: all fibres are in the longitudinal direction. These laminates can only be glued.

PC® Carbocomp PLUS

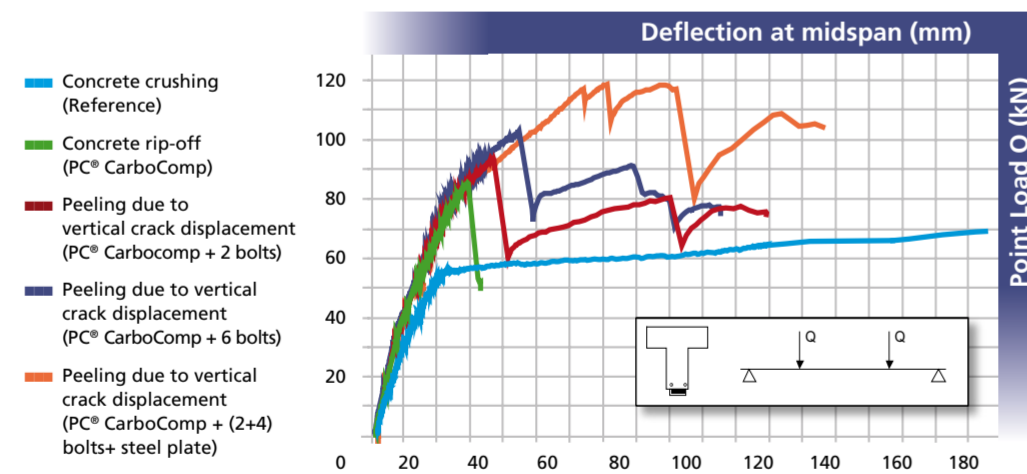
Multi-directional carbon fibre laminates: the fibres are situated in the longitudinal direction with additional fibres at + 45°, - 45° which makes it possible to anchor the laminates with bolts into the structure.

Properties

Tensile strength	> 2.850 MPa
E-modulus	> 175 GPa
Max. elongation	1,65%
Density	1,6 g/cm³
Standard width	50, 60, 80, 100, 120 mm

Advantages multi-directional laminates:

- Shorter anchoring length
- Increase of ductility
- Prevention of concrete rip-off
- Higher loads possible



PC® Carbocomp textiles
Confinement of columns



PC® Aracomp
Confinement of columns



PC® 5800 BL
PC® 5800 Carbo
Epoxy glue and impregnation resin



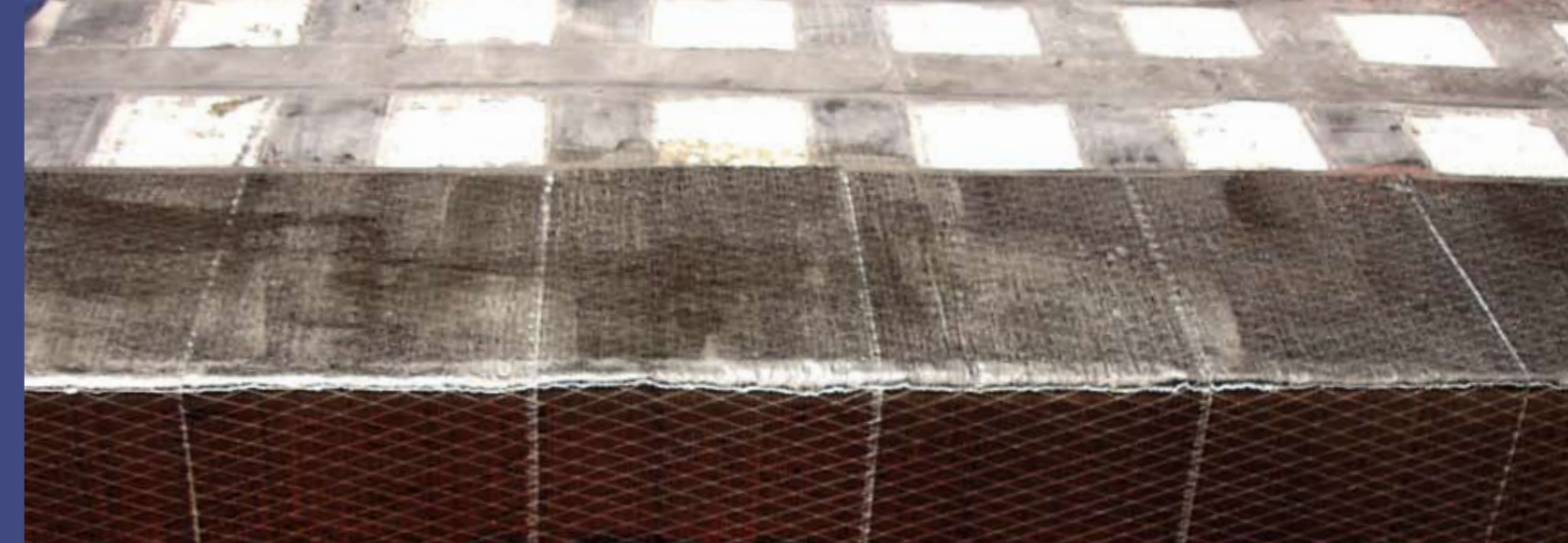
Epoxy repair mortars



PC® Structo-inject 1380
PC® Structo-inject 1390
Epoxy injection resins



Tradecc, your professional partner for innovative solutions.



PC® Carbocomp textiles are used for the shear strengthening of constructions. These carbon fibre textiles are impregnated with the PC® 5800 Carbo epoxy resin and applied on the surface which has to be reinforced.

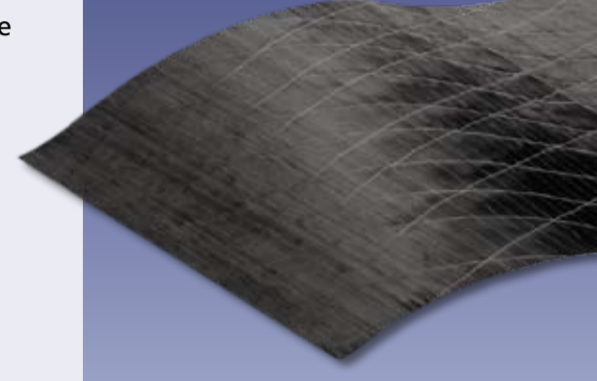
Applications

- Increase compressive strength of columns
- Increase shear strength of beams
- Preventive protection against seismic activity

Advantages

- High tensile strength
- High durability
- Very little creep
- High acid and alkali resistance
- Easy to apply
- Light weight and thickness
- Flexibility of surface geometry

Carbon fibre textiles



Properties

	Weight:	225 g/m²	300 g/m²
Fabric equivalent thickness		0,125 mm	0,167 mm
Tensile strength		4.000 MPa	4.000 MPa
E-modulus		240 GPa	240 GPa
Maximum elongation		1,60%	1,60%
Density		1,80 g/cm³	1,80 g/cm³

Special applications: PC® Carbocomp Sandwich

Light weight composite beam composed of a light weight core material (eg balsa wood), PC® Carbocomp textiles and multidirectional carbon fibre laminates PC® Carbocomp plus for the external reinforcement of plates and beams.



TRADECC

Products and techniques for the construction and chemical industry

